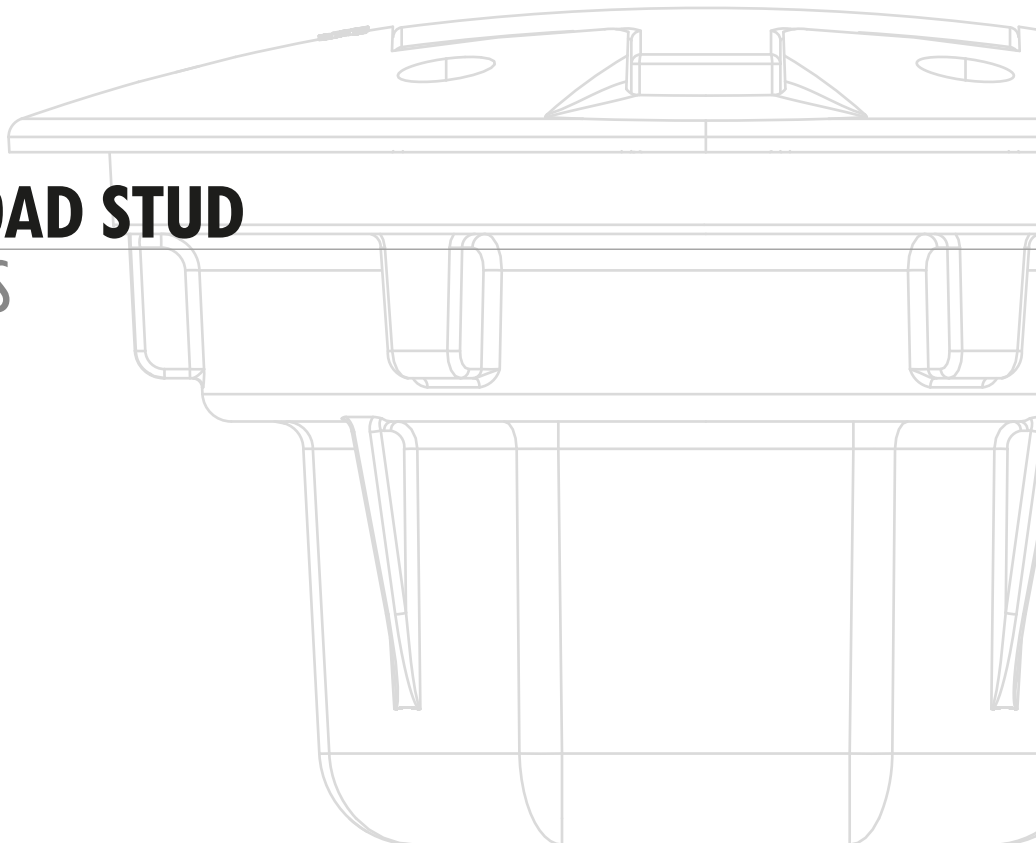


SR-20

HARDWIRED ROAD STUD
YOUR SAFETY EYES



SR-20

SR-200



HARDWIRED ROAD STUD

KEY FEATURES

- Hardwired system for solar powered or electrical
- Current drivers to extend LEDs life time
- High brightness LEDs with chromatic calibration and multiple colors
- Variable lengths of cables
- LEDs protected by polycarbonate window
- Possibility of connection of N elements
- Operation Mode: Always on, Flashing, Sequential

SPECIFICATIONS:

ELECTRICAL

Power Supply: 12Vdc or 24Vdc

Current Consumption: 20mA (uni-directional) or 40mA (bi-directional)

OPTICAL

LEDs Number: 1 or 2 LEDs (uni-directional), 2 or 4 LEDs (bi-directional) - 5mm

LEDs Colour: Amber, Red, White, Blue, Green

LEDs Configuration: Uni-directional or Bi-directional

MECHANICAL

Dimensions: Ø144mm x 87mm

Weight: 1Kg

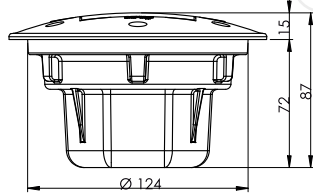
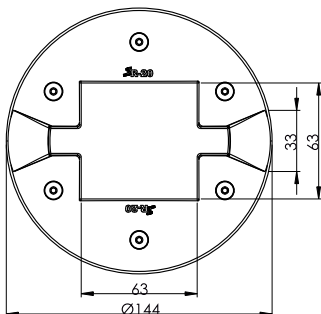
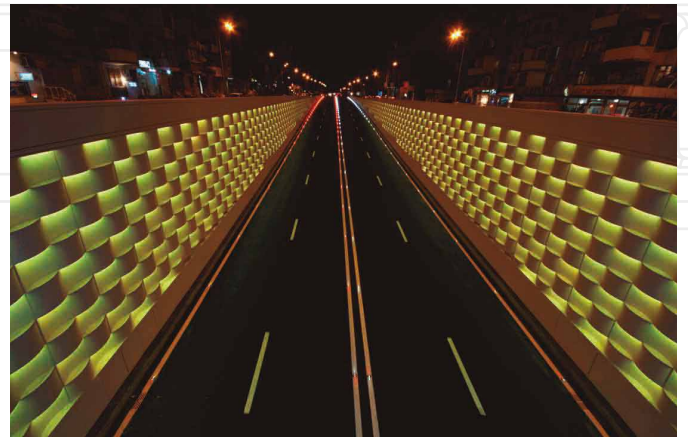
Projection: 15mm

Minimum Installation Depth: 80mm

Material: Aluminium, Polycarbonate

Mechanical Resistance: 20 Tons

Protection Index: IP68 and IK10



Dimensions: mm

Quinta do Carreiro, Lote 9/14 - Frossos
4700-154 Braga - Portugal
TEL: +351 253 300 440 | FAX: +351 253 300 449
E-MAIL: sernis@sernis.com | SITE: www.sernis.com